

Pumps

(Most material from *Fluid Mechanics*, Çengel and Cimbala, Chapter 14)

Introduction and Terminology:

- “**Pump**” is a general term for any device that adds mechanical energy to a fluid.
- For liquids, we usually call them “**pumps**”.
- For gases, we usually call them “**fans**”, “**blowers**”, or “**compressors**”, depending on the relative pressure rise and volume flow rate.

FIGURE 14–3

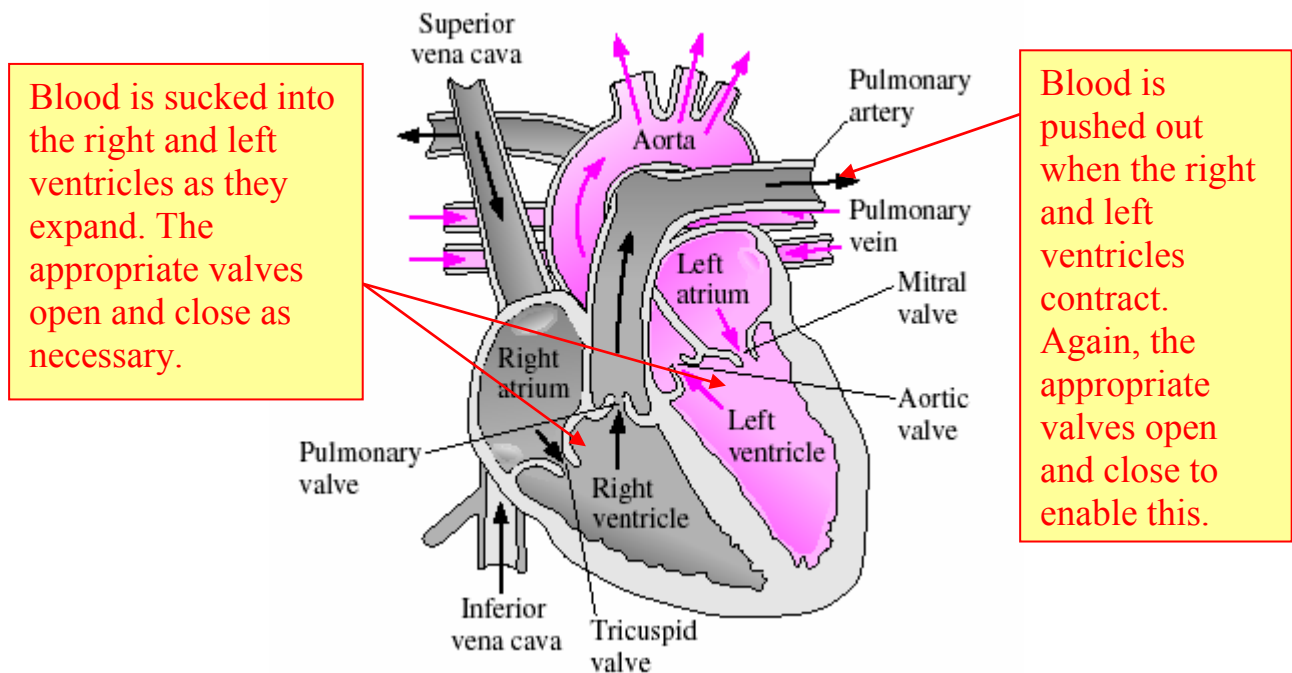
	Fan	Blower	Compressor
ΔP	Low	Medium	High
\dot{V}	High	Medium	Low

When used with gases, pumps are called *fans*, *blowers*, or *compressors*, depending on the relative values of pressure rise and volume flow rate.

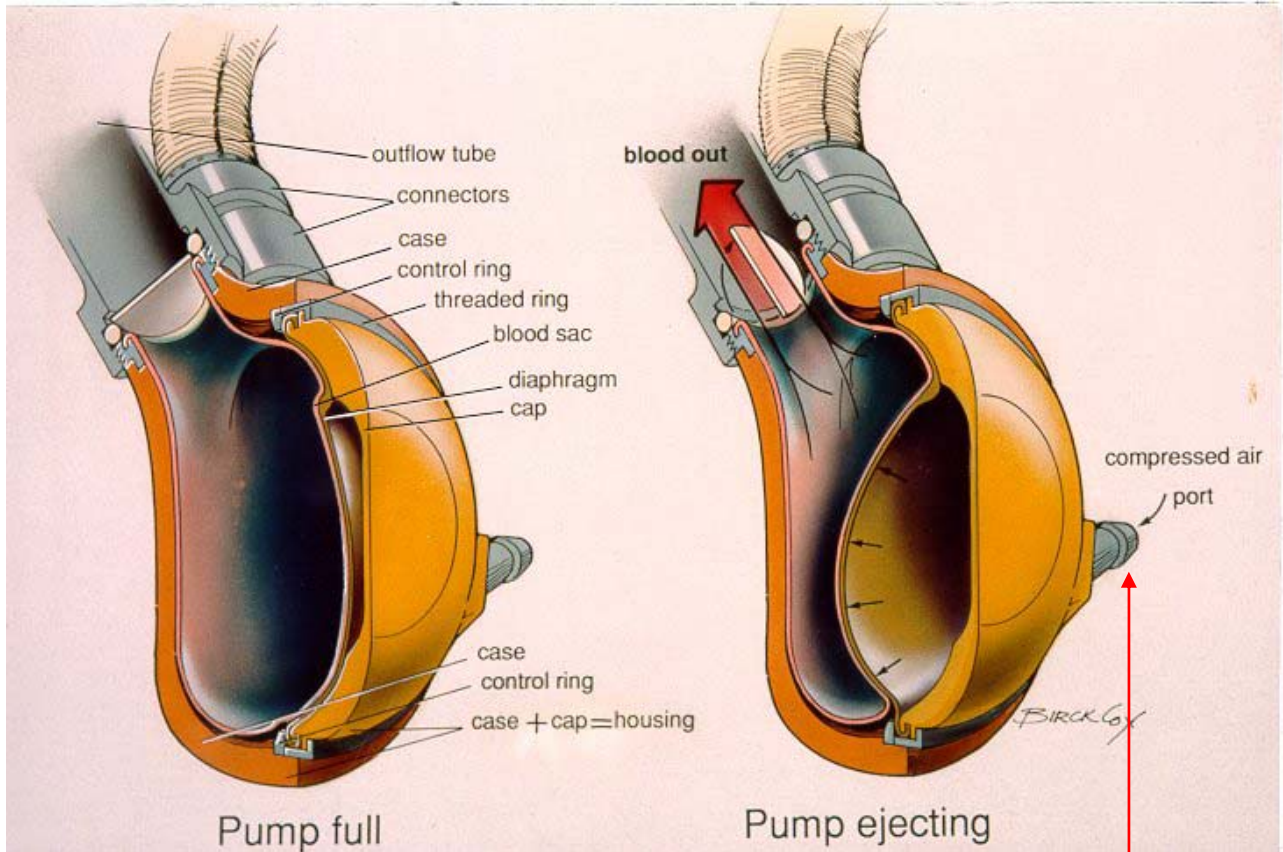
- There are two basic types of pump:
- **Positive displacement pumps (PDPs)** – fluid is sucked into a closed volume, and then the fluid is pushed out.
- **Dynamic pumps** – no closed volume is involved; instead, rotating blades called *impeller blades* supply energy to the fluid.

Positive Displacement Pumps:

- Your heart is a great example of a positive displacement pump (PDP).



- Engineers have designed artificial hearts that are also PDPs, and work in similar fashion:



In this design, compressed air is used to expand and contract a bladder to suck in and expel the blood – in much the same way as a bellows.

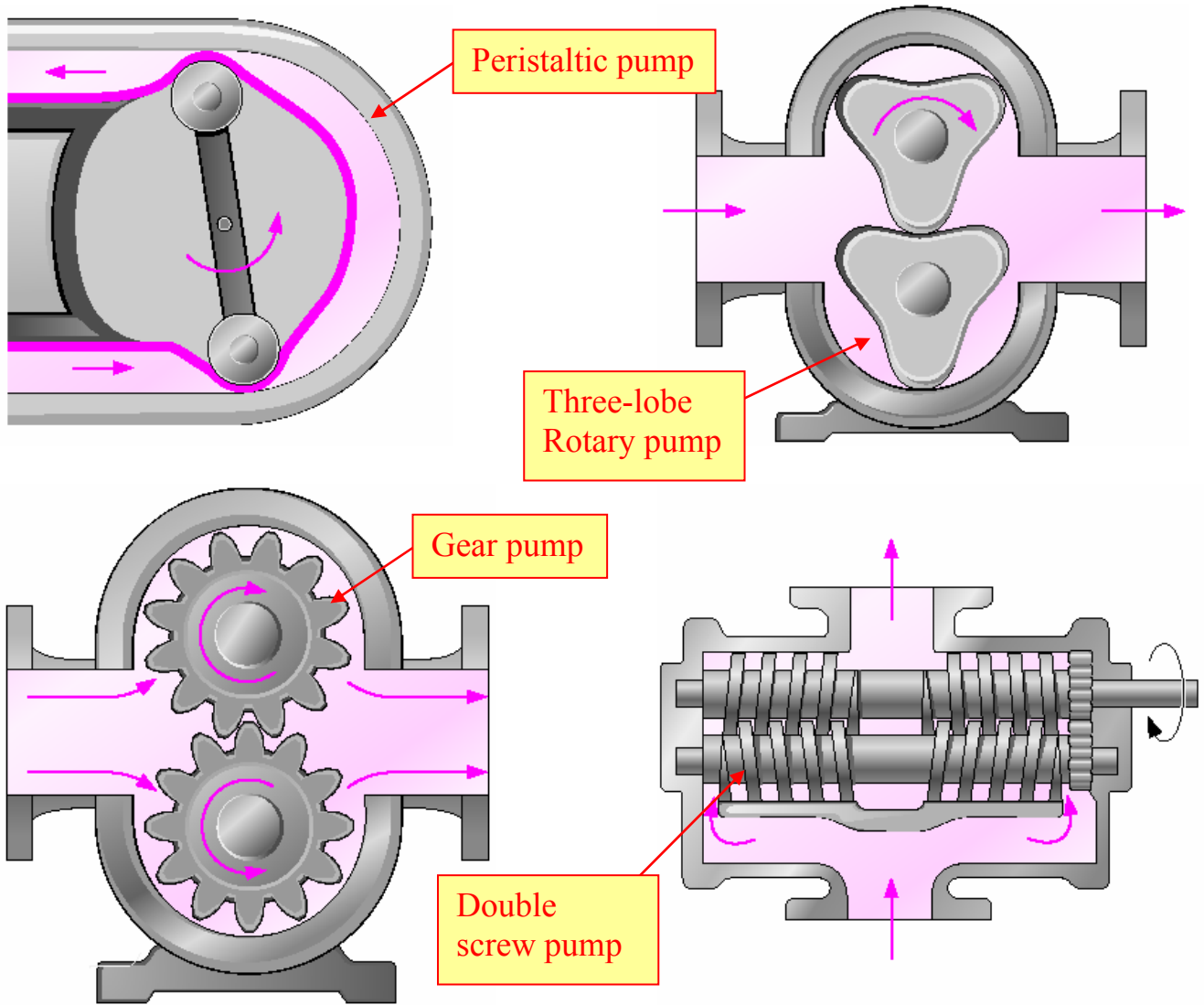
- There are many other examples of positive displacement pump designs:



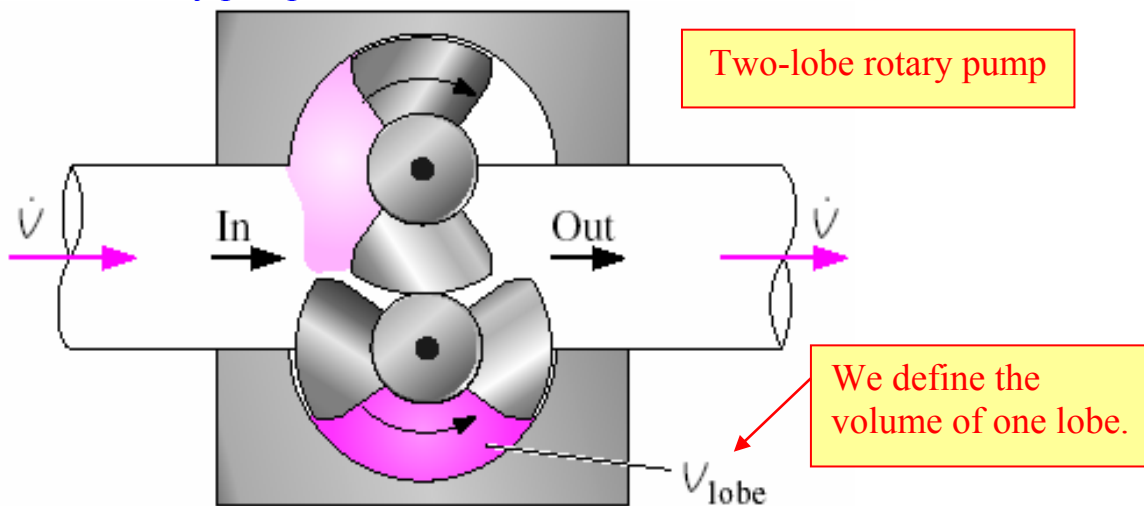
Bicycle
tire
pump

Old-
fashioned
water pump

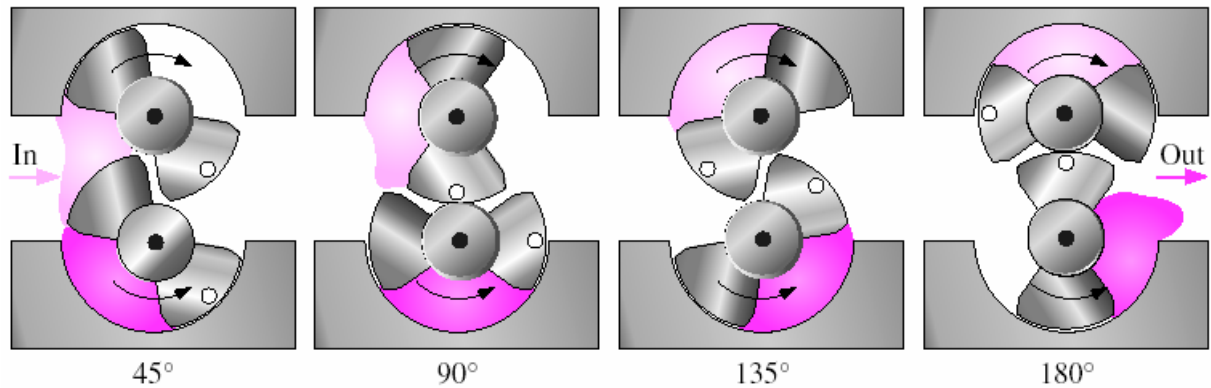




- It is very simple to predict the volume flow rate of a PDP. Let's consider a simple two-lobe rotary pump for illustration:



- By analyzing the geometry as the two counter-rotating shafts turn, we see that for each half turn of the shafts (180°), this pump delivers two lobe volumes of fluid.



- For a given rotation rate \dot{n} (rpm) of the pump shaft, we can easily calculate the volume flow rate, assuming no leakage through the small gaps. This is illustrated in the following example problem:

EXAMPLE 14-4

Volume Flow Rate through a Positive-Displacement Pump

A two-lobe rotary positive-displacement pump, similar to that of Fig. 14-27, moves 0.45 cm^3 of SAE 30 motor oil in each lobe volume V_{lobe} , as sketched in Fig. 14-30. Calculate the volume flow rate of oil for the case where $\dot{n} = 900 \text{ rpm}$.

SOLUTION We are to calculate the volume flow rate of oil through a positive-displacement pump for given values of lobe volume and rotation rate.

Assumptions **1** The flow is steady in the mean. **2** There are no leaks in the gaps between lobes or between lobes and the casing. **3** The oil is incompressible.

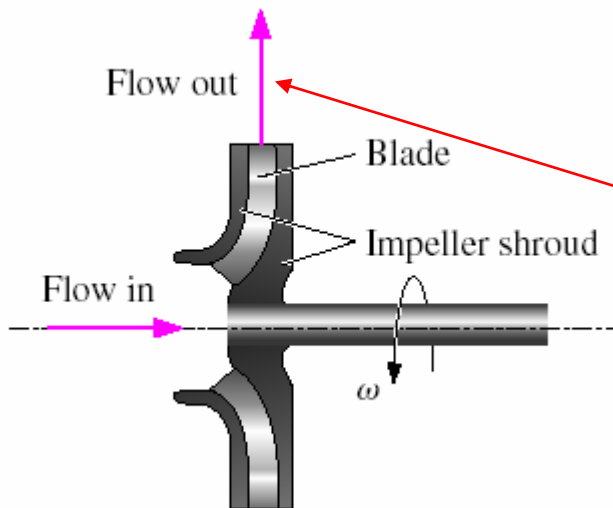
Analysis By studying Fig. 14-27, we see that for half of a rotation (180° for $n = 0.5$ rotations) of the two counter-rotating shafts, the total volume of oil pumped is $V_{\text{closed}} = 2V_{\text{lobe}}$. The volume flow rate is then calculated from Eq. 14-11,

$$\dot{V} = \dot{n} \frac{V_{\text{closed}}}{n} = (900 \text{ rot/min}) \frac{2(0.45 \text{ cm}^3)}{0.5 \text{ rot}} = 1620 \text{ cm}^3/\text{min}$$

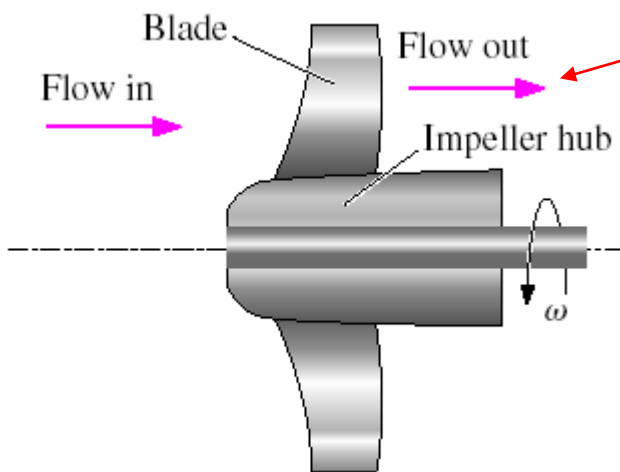
Discussion If there were leaks in the pump, the volume flow rate would be lower. The oil's density is not needed for calculation of the volume flow rate. However, the higher the fluid density, the higher the required shaft torque and brake horsepower.

Dynamic Pumps:

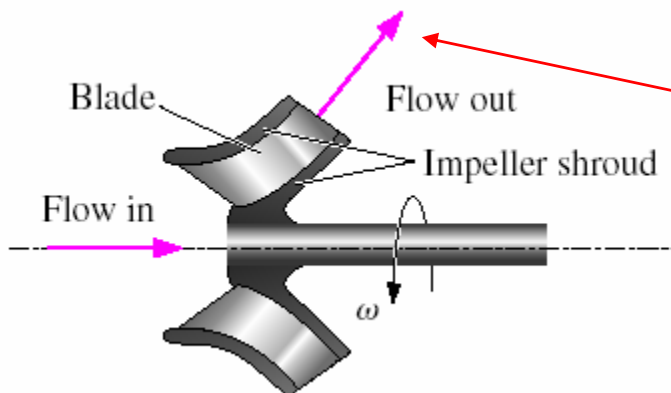
- Dynamic pumps do not have closed volumes. Instead, spinning *impeller blades* or *rotor blades* transfer kinetic energy and impart momentum to the fluid.
- There are three main types of dynamic pumps: *centrifugal flow*, *axial flow*, and *mixed flow*:



Centrifugal flow pump:
Fluid enters axially and is discharged radially.

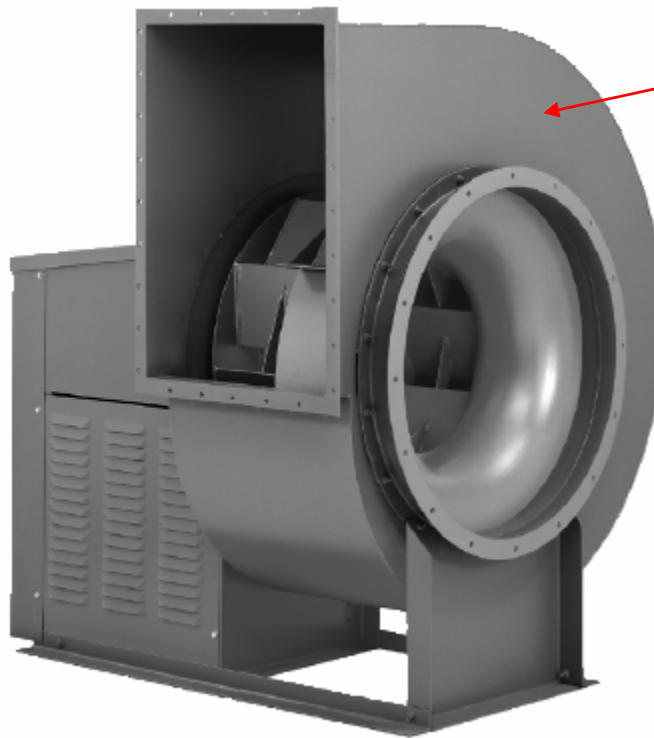


Axial flow pump:
Fluid enters axially and is discharged axially.



Mixed flow pump:
Fluid enters axially and is discharged at some angle between radial and axial.

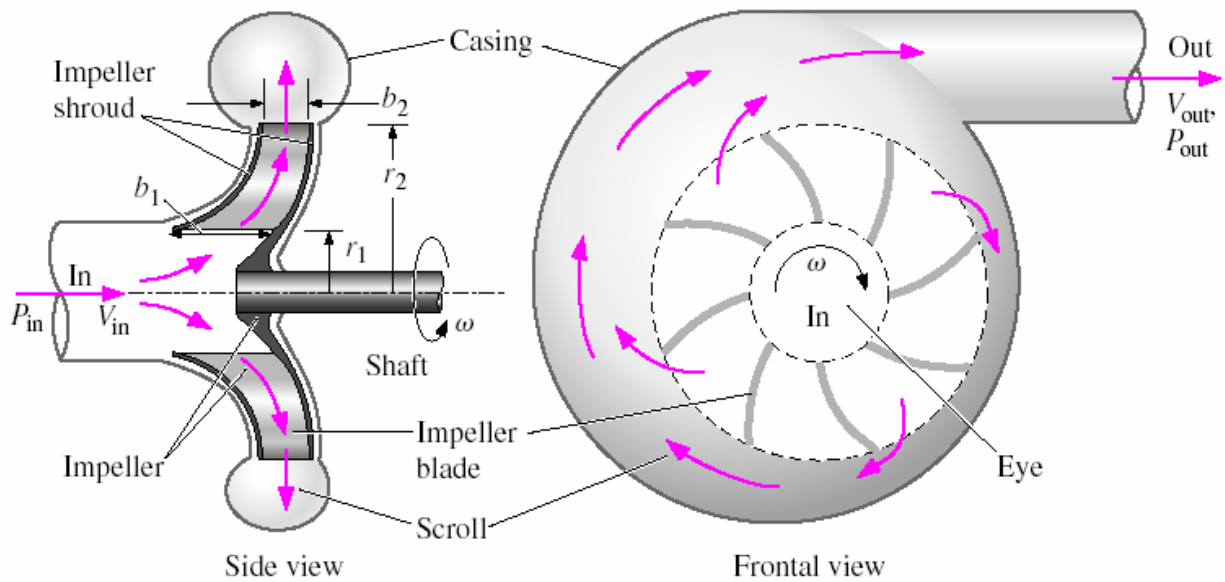
- Of these, centrifugal pumps are the most common, and are recognized by their scrolled (snail-like) casing.



A typical centrifugal blower with its characteristic snail-shaped scroll.

This is an air blower.

- Front and side views of a typical centrifugal pump with backward-inclined blades:



- It is more difficult to predict the volume flow rate induced by a dynamic pump since there are not closed volumes that are easily calculated. Instead, we must use the equations of conservation of mass and angular momentum to analyze the flow and the performance of the pump.