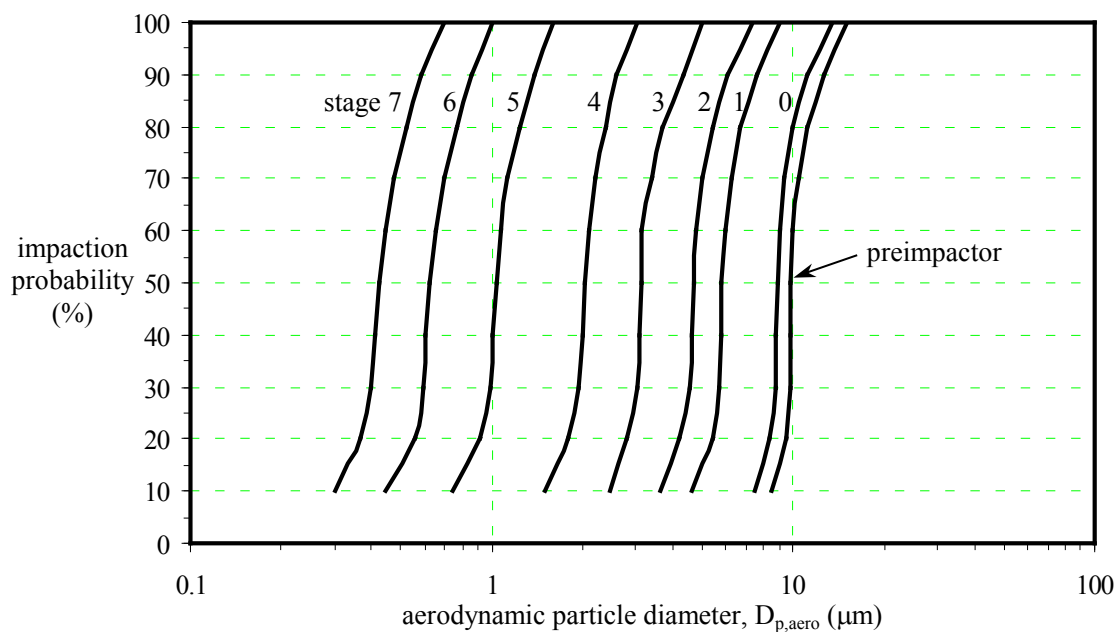
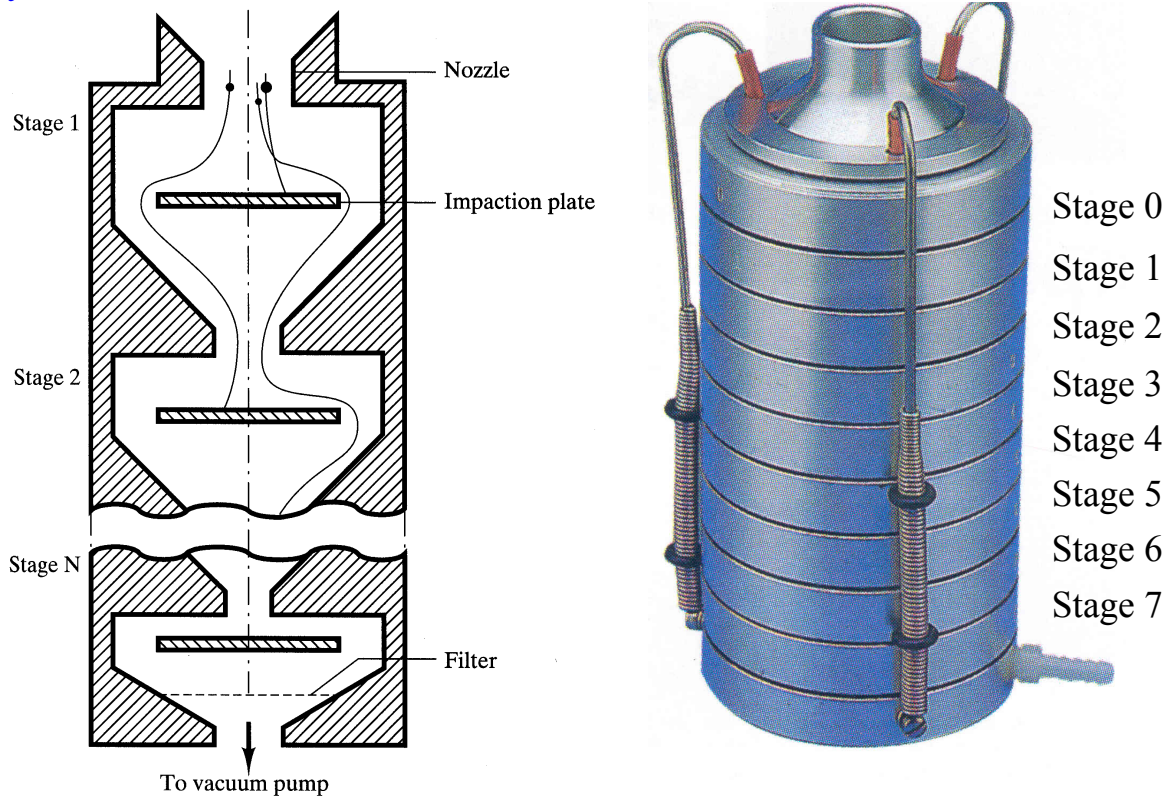
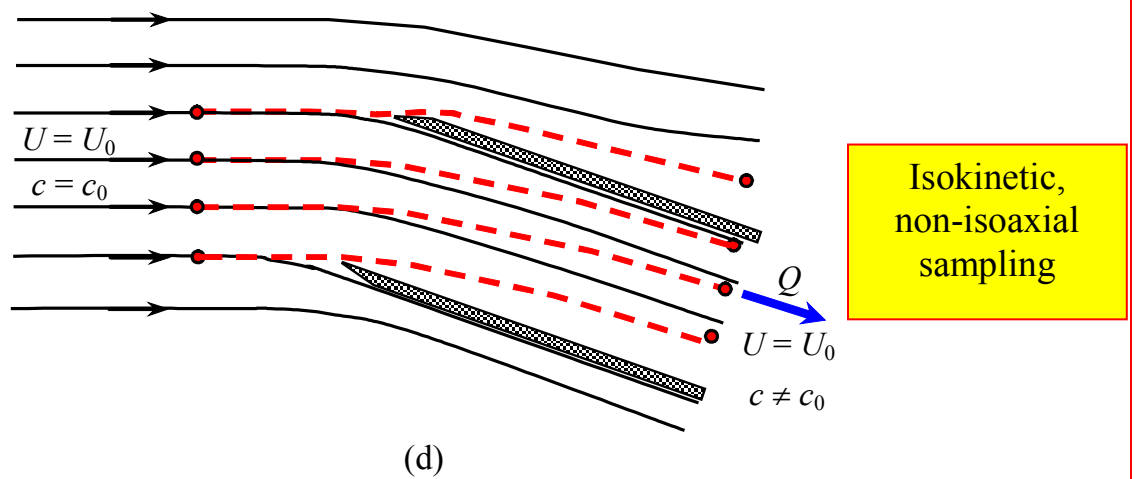
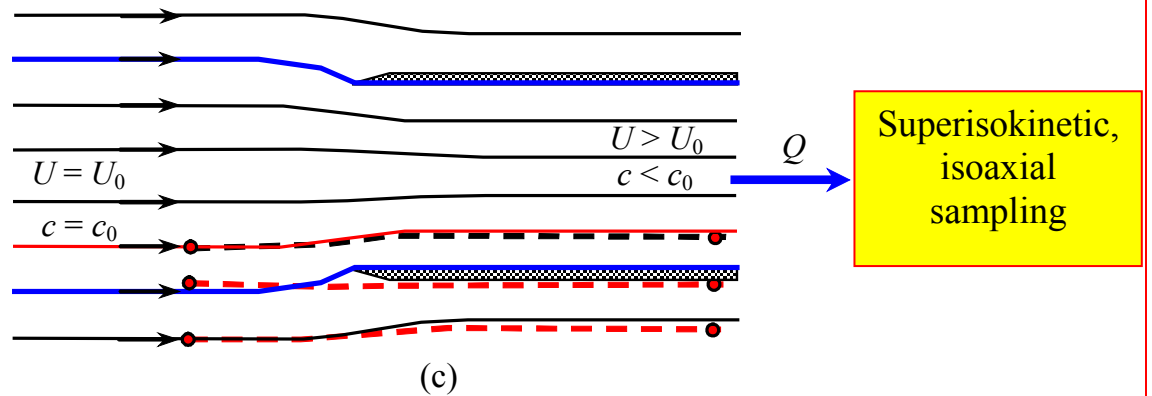
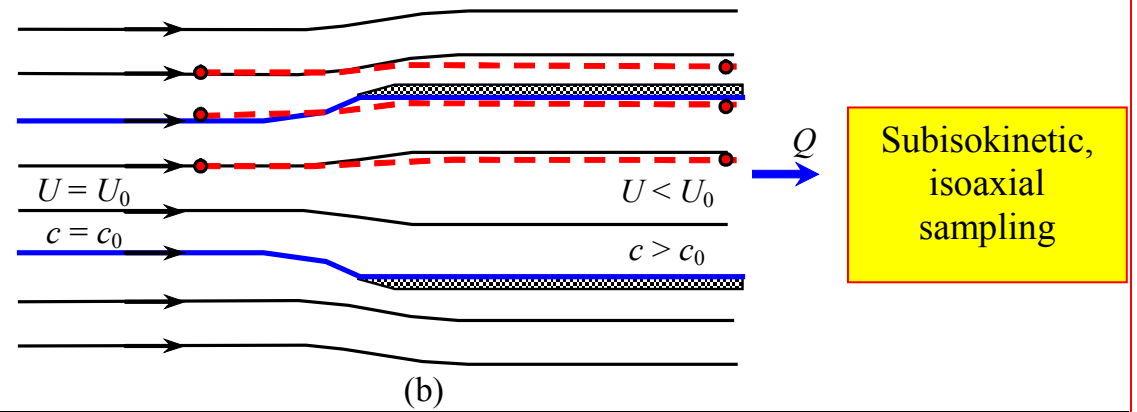
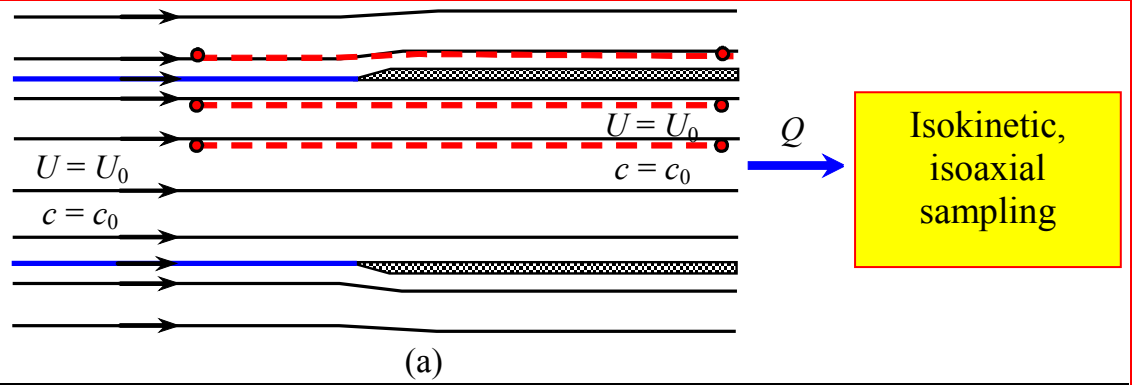


**Today, we will:**

- Continue discussing about cascade impactors
- Discuss some issues related to sampling with a probe (isokinetic, isoaxial, etc.)
- Begin a discussion about how water drops (rain) cleans the air

Recall our cascade impactor, with several stages ( $j = 0, 1, 2, 3, \dots J-1$ ). This one is 8-stage, with 8 trays.





Particle trajectories (dashed) and streamlines (solid) for (a) isokinetic, isoaxial sampling, (b) subisokinetic, isoaxial sampling, (c) superisokinetic, isoaxial sampling, (d) isokinetic, but non-isoaxial sampling (misaligned sampling probe); dividing streamlines are **bold** and **blue**.