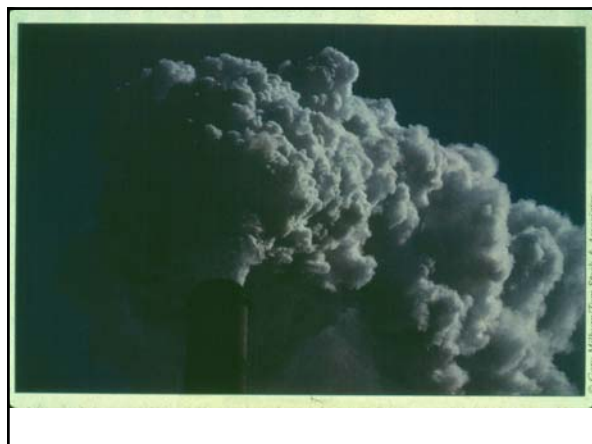


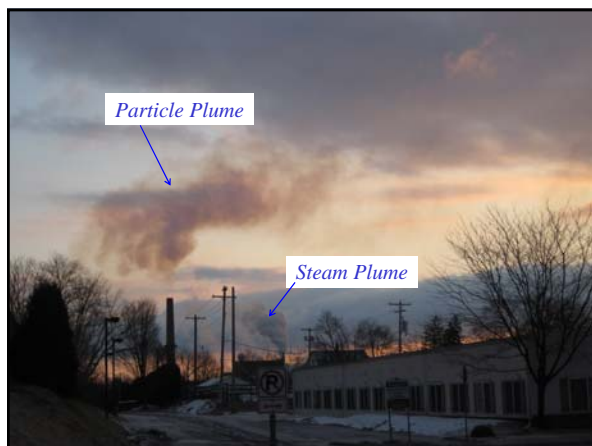
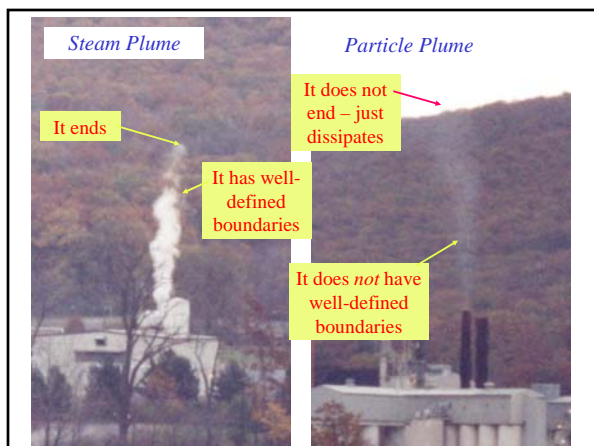
Steam Plumes

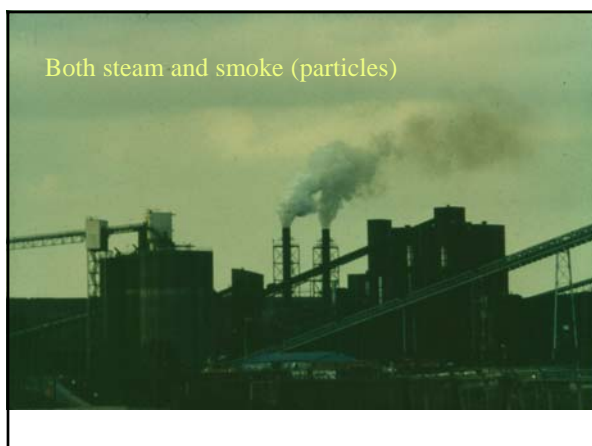
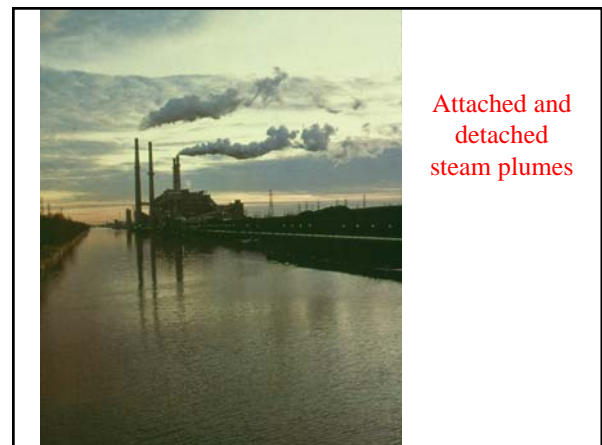
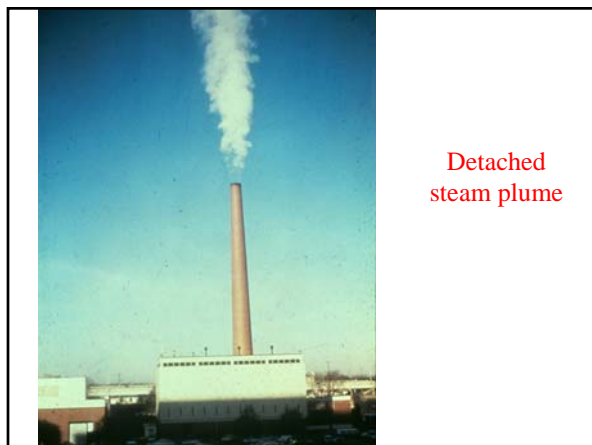
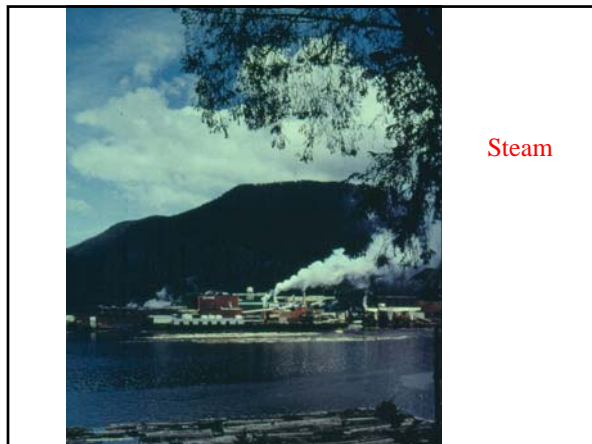
- Steam plumes are *not* regulated by the EPA or DEP
- The main problem with steam is that it is often confused with smoke/particle plumes
- We must learn to recognize steam plumes so we *do not mistake them for smoke/particle plumes*



Characteristics of steam plumes

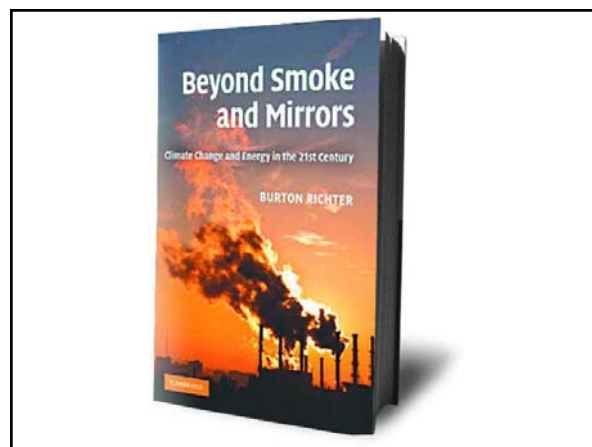
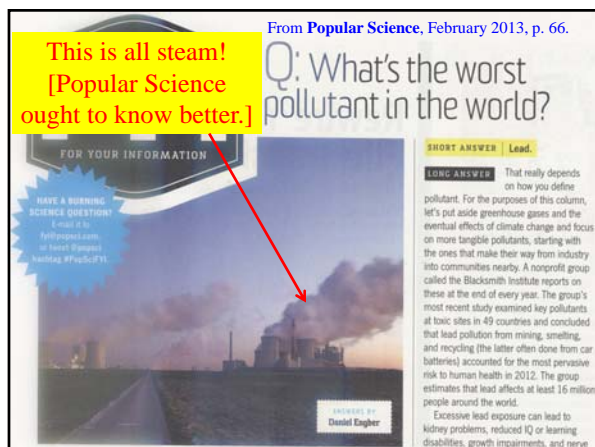
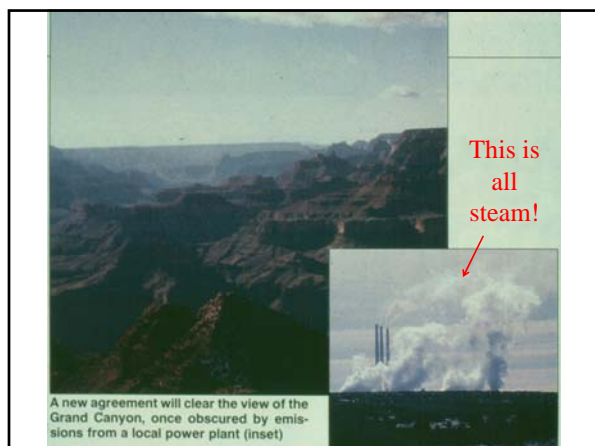
- Relatively sharp boundaries or edges
- Very white, like clouds
- End abruptly (compared to particle plumes which can extend for miles - just slowly dissipate)





The media often mislead the public

- TV reports, books, newspapers, magazines, and brochures often show *steam plumes* to illustrate *smoke plumes*!
- **Why?**
 - They (and the public) usually do not know the difference.
 - Steam plumes look more impressive (especially with the sun in back of the plume)
 - Smoke stack emissions have been cleaned up so much that it is hard to find good smoke plume pictures anymore.



Examples – take a quiz!

Photographs of various plumes

Are they:

- Smoke/particle plume?
- Steam plume?
- Smoke/particle *and* steam plume?

